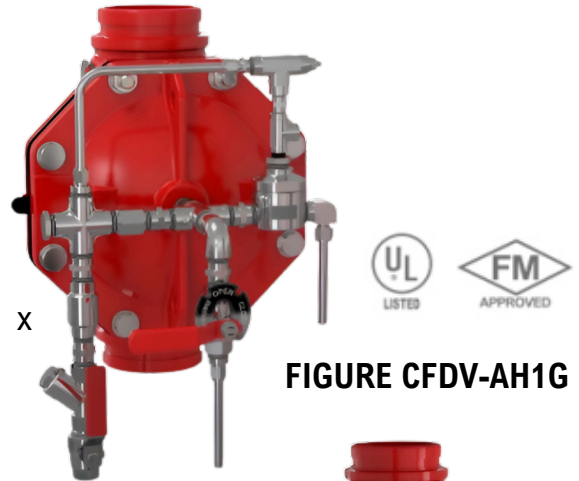


## REMOTE RESET DELUGE VALVE

### DESCRIPTION

1. Fluid: Water, Brackish water, Sea water, Foam.
2. Size Range: 40mm to 250mm (1½" to 10")
3. Available connections Ends: Flange x Flange, Groove x Groove, Flange x Groove, Groove x Flange, Thread x Thread
4. Nominal Pressure: 250 PSI (17.2 bar).

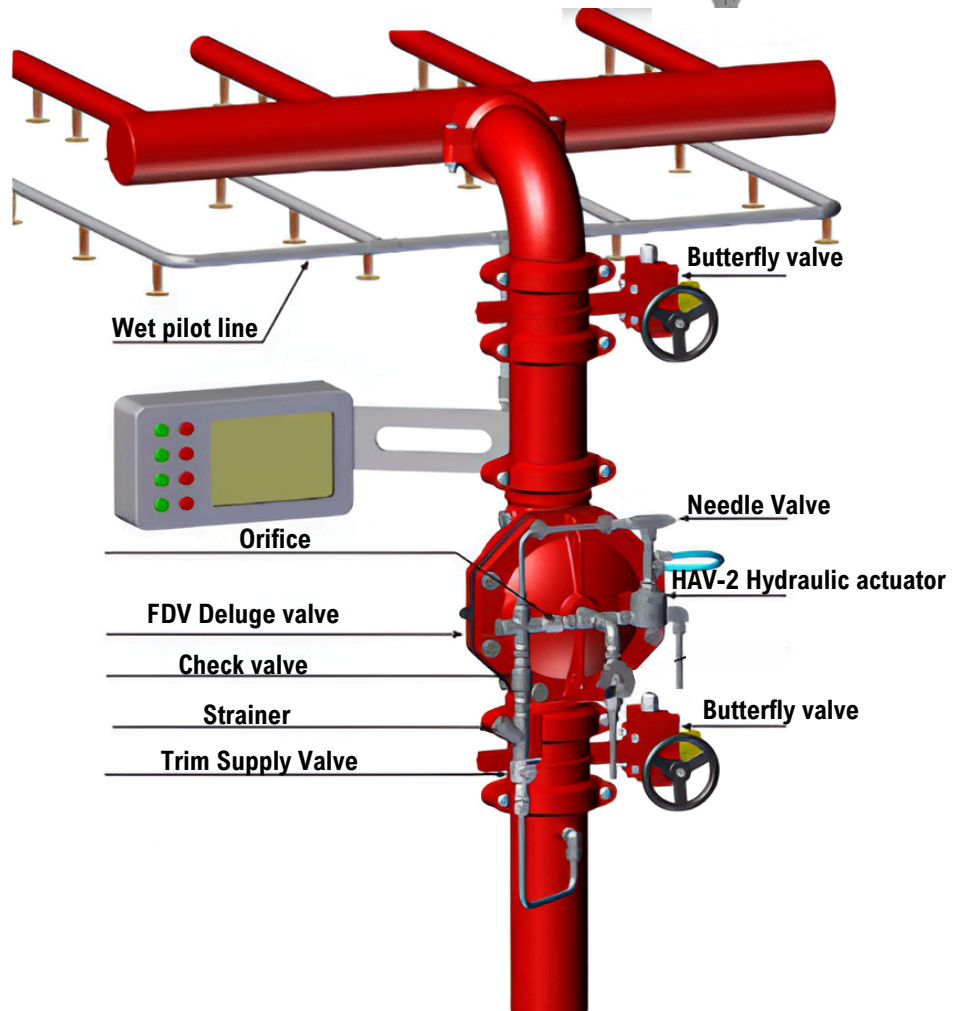


**FIGURE CFDV-AH1G**

### Actuator

- Hydraulic
- Pneumatic Remote
- Electro-Pneumatic Remote

### Typical installation



### Trim Orientation

- Horizontal
- Vertical

### Material

- Stainless Steel 316
- Brass
- Cupro-Nickel
- Monel®